

Distinctive Carpets & Rugs

“TO THE DESIGN TRADE ONLY”

2023 New Wilton & Wool Patterns



2023 Introductions & Custom Sized Rugs

Our products are sold "TO THE DESIGN TRADE ONLY" offering an exclusive line of products to our designers. For over 25 years, we have been a complete wholesale resource for high quality carpets, area rugs, and custom rugs. We attribute our success to our customers and have dedicated ourselves to providing excellence in quality, design, service, and value.

Sample Folders are not available for all products

Memo Samples are available for all styles

Email sample orders to samples@distinctivecarpets.net or fax to 704-489-4404

A Custom Sized Rug is the best way to provide the perfect sized rug for any home

Step 1: Select your shape. Round, Square, Rectangle, etc.

Step 2: Decide what finished sized rug you need. With our program, we can fabricate any size or shape.

Step 3: Select your desired style and color from our variety of broadloom.

Step 4: Select a finished edge.

For quotes, email anne@distinctivecarpets.net, fax us @ 1-888-663-1349

or

log into our website for an instant quote!

www.distinctivecarpets.com

- Rugs are cut by hand
- A Luxury Felt Pad with 1/4" cushion is the ultimate in rug padding, offering custom sizes. We can cut your pad to fit your custom rug.
- A felt backing is always applied to your rug to protect the rug and the floor.
- All custom rug orders require 4 to 5 weeks for fabrication.

Kiki Woven Wilton

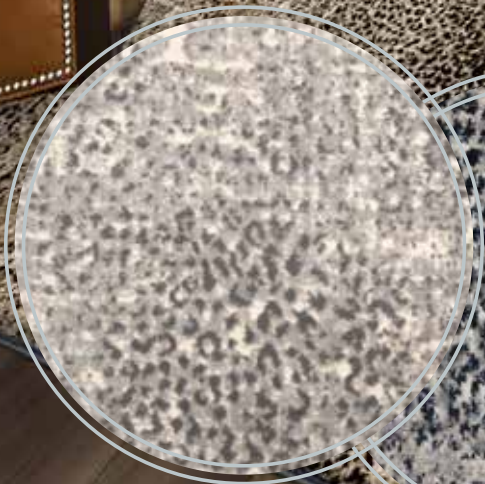
Width 13'2"

71% Polypropylene / 29% Polyester

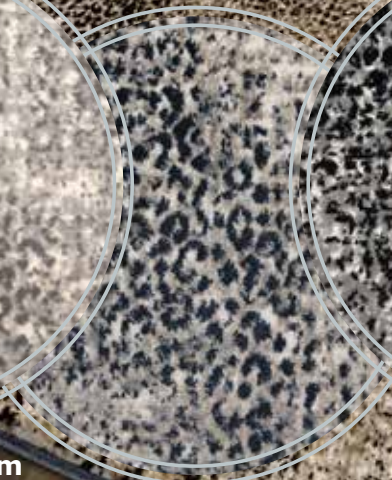
Create a bold statement with the **Kiki** Collection. With its abstract animal pattern and beautiful color selection, Kiki will create a fun and attractive look to any home. Kiki Woven Wilton can be made into custom sized rugs ensuring the perfect fit for any space.



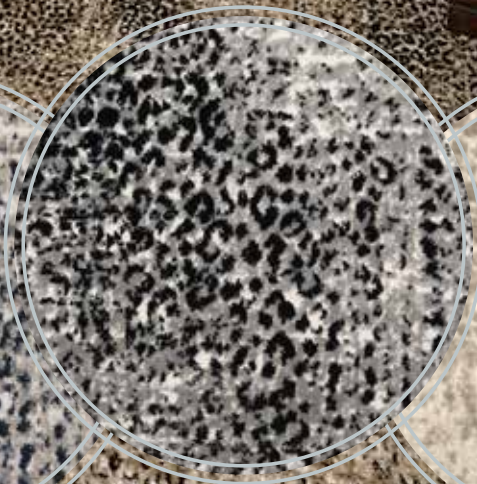
26391 Camel



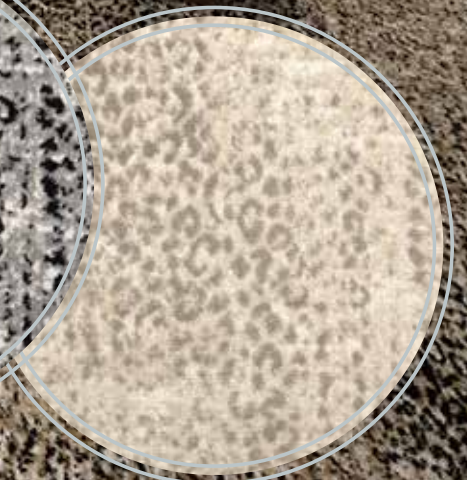
26397 Chromium



26394 Midnight Blue



26396 Panda



26392 Pearl

Bellalina Woven Wilton

Width 13'2"

71% Polypropylene / 29% Polyester



Bring any area to life with the **Bellalina Woven Wilton** collection. Bellalina is an elegantly designed residential carpet that features a nice oriental style of pattern. Beautiful for stairs, wall to wall installation, or as a custom sized rug! Available in 6 designer colors.



Ocean 33334

Creme
33332

Ivory
33333

Cloud
33335

Charcoal
33336

Casabella Woven Wilton

Width 13'2"

66% Polypropylene / 34% Polyester



The **Casabella Woven Wilton** collection contains a beautiful minimal diamond design that is perfect for any style of décor. This stylish design is simple yet stunning! Available in 6 designer colors.



Sterling 32541



Chrome
32542

Wave
32543

Golden
32544

Mocha
32545

Ocean
32546

Cece Woven Wilton

Width 13'2"

81% Polypropylene / 19% Polyester

Add a dash of beauty and charm to any home with the **Cece Woven Wilton** Collection. Cece contains an enticing white speckled pattern spread across a beautiful striated color palette.



Crystabella Woven Wilton

Width 13'2"

71% Polypropylene / 29% Polyester



Crystabella checks all the boxes when it comes to high style and design. The added horizontal linear texture across the width of the pattern adds depth, dimension, and just the right amount of visual interest to elevate the overall aesthetic.



Chrome
35522

Metal
35523

Wave
35524

Mocha
35525

Ocean
35526

Gigi Woven Wilton

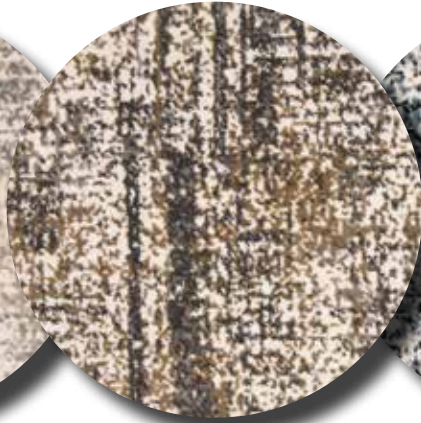
Width 13'2"

63% Polypropylene / 37% Polyester

Gigi's delightful intricacies inspire the senses. The high/low pile accentuates the versatile pebble texture. The ultra-fine details of this elite construction add to the interest and dimension. Gorgeous color blending makes up the sophisticated high styled palette.



61292 Chromium



61295 Metal



61296 Midnight Blue



61297 Panda



61291 Copper

Lala Woven Wilton

Width 13'2"

73% Polypropelene / 27% Polyester

The **Lala** collection features beautiful linear striations and a remarkable color palette that will have an astonishing effect on any room. Experience this elegant design that is simple, yet stunning.



29581 Flint



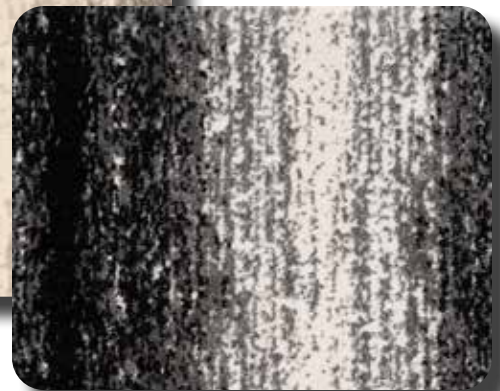
29586 Chromium



29585 Wave



29587 Pearl



29583 Panda



Go black and white!!
A posh take on an animal design. **Gotham Cheetah** is a striking pattern that will add glamour and allure to a bedroom or staircase. It's sure to be the cat's meow.



Gotham Grain features an all-over abstract texture. Clean light patterning against the dark rich background creates a bold pop. The vertical nature of this design leads the eye across the goods.



Gotham Lane 74321 Onyx
100% Polypropylene

The slight sway of the broken chevron patterning in **Gotham Lane** gives a truly refreshing look to a more classic design. Texturing adds depth and dimension.



Gotham Square 16631 Onyx
91% Polypropylene / 9% Polyester

Modern geometry at its best. With its precise square motif, the structure and simplicity of **Gotham Square** is what makes this design so chic and visually appealing!



Gotham Vanish 31311 Onyx
52% Polypropylene / 48% Polyester

A fantastic abstract texture, the bright white adds lightness and radiance...the perfect background to showcase the dark saturated crackle texture.



Gotham City 15981 Onyx
100% Polypropylene



Infinity Texture Woven Wilton

Width 13'2"

90% Polyester / 10% Polypropylene

Infinity Texture offers a gorgeous hand made look with tons of texture and style. Silk-like highlights create a stylish and classy appeal while specially dyed yarns create a vintage look. Infinity Texture goes great with any style decor and will sure meet any home's need for design.



101 Cobblestone



102 Earth



103 Granite



104 Sandstone



105 Tourmaline

Infinity Tradition Woven Wilton

Width 13'2"

90% Polyester / 10% Polypropylene

Infinity Tradition offers a gorgeous traditional hand made look. This ravishing pattern contains silk-like fibers as well as specially dyed yarns to create a traditional vintge look.



102 Fieldstone



101 Cobblestone

103 Granite



102 Fieldstone

104 Tourmaline

Infinity Trellis Woven Wilton

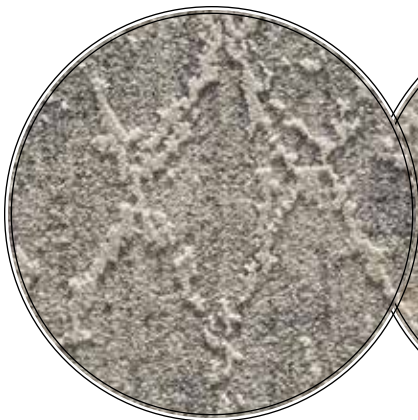
Width 13'2"

90% Polyester / 10% Polypropylene

Infinity Trellis offers a hand made look in a loom woven construction. Silk-like highlights and a beautiful trellis pattern create a lustrous appeal while specially dyed yarns create a vintage look.



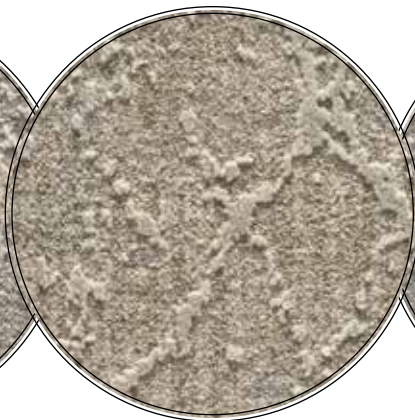
104 Tourmaline



101 Cobblestone



102 Fieldstone



103 Sandstone



104 Tourmaline

King Cheetah Woven Wilton

Width 13'2"

100% Polypropylene

King Cheetah Woven Wilton

is a modern day cheetah pattern that contains a vibrant and captivating color palette. This fierce carpet is extremely versatile to decorate with and can add a dash of fun to any area!

** Available in 12 colors*



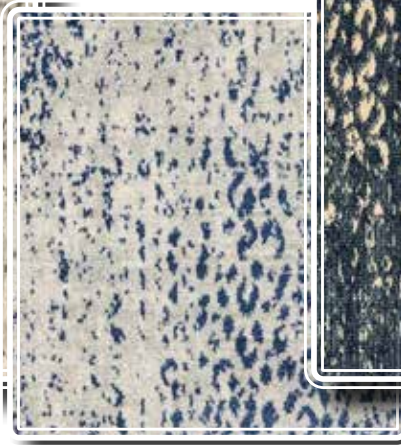
67786 Wild Root



67787 Dune



67782 Metal



77783 Inked



67780 Marine

Motion Woven Wilton

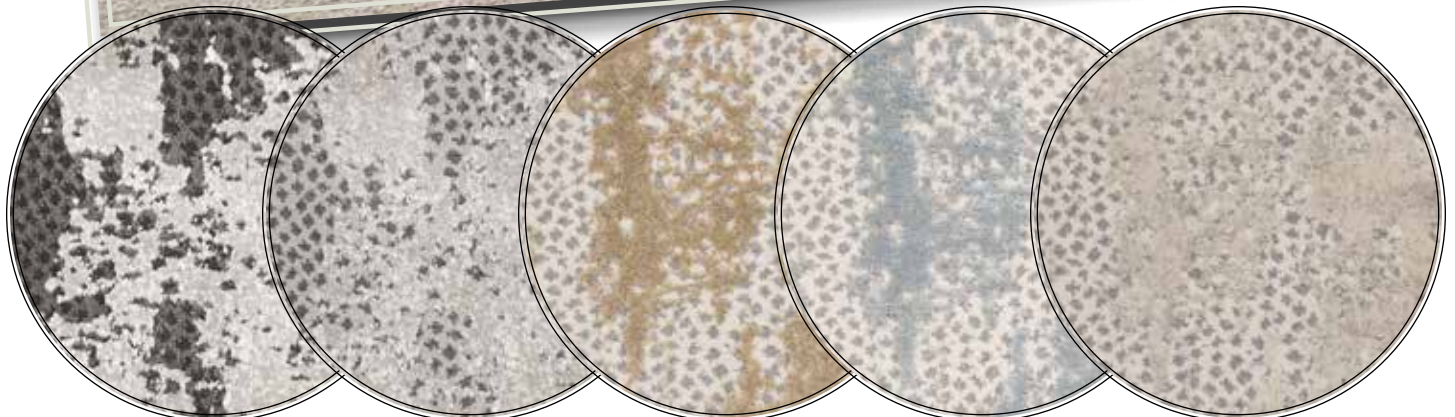
Width 13'2"

55% Polypropylene / 45% Polyester

Set a gorgeous foundation in **Motion**, an all over abstract pattern in the high pile and an animal inspired spot in the background. This unique multi-faceted pattern embodies style with it's beautiful depth and density. A gorgeous quality to add a designer touch to any space.



27131 Cream



Caviar
27133

Metal
27132

Sand
27137

Sky
27134

White Rain
27135

Musical Woven Wilton

Width 13'2"

76% Polypropylene / 24% Polyester

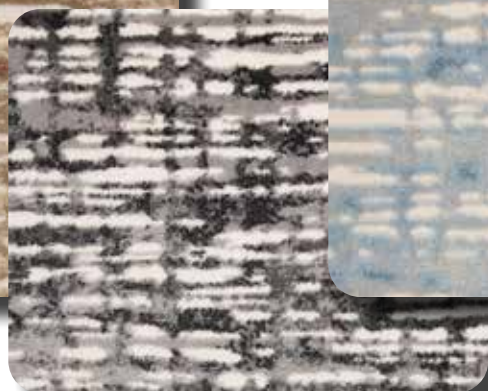
Musical is a balanced design that exudes harmony and style. It is a gorgeous abstract pattern with unexpected color combinations. High low pile adds beautiful texture and highlights the incredible hand.



Graphite
30941



Autumn
30942



Charcoal
30945



Sky
30946



Ocean
30944

Nova Woven Wilton

Width 13'2"

75% Polypropylene / 25% Polyester

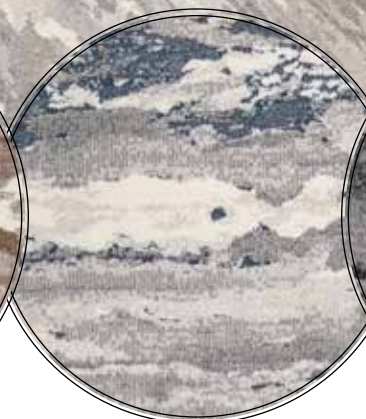
Nova is a sensational multicolored abstract. The swanky high low pile accentuates the fine distressing that runs throughout the cloud like design. Striking colors and cutting edge design make Nova out of this world.



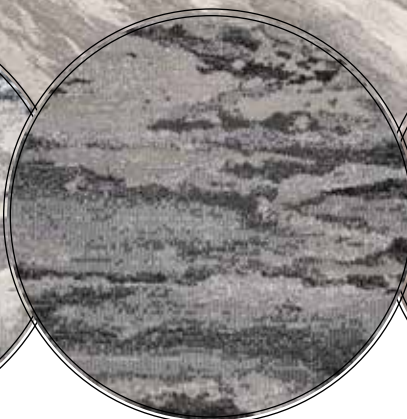
33241 Silver Charm



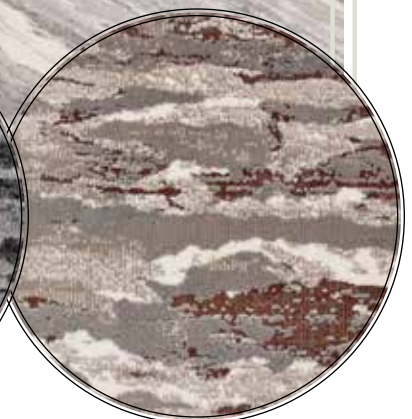
Mocha
33243



Ocean
33244



Titanium
33242



Spice
33245

Ashford Luxury Wool

Width 15'

100% New Zealand Wool

Dense is the name of the game for **Ashford Luxury Wool**, our latest chunky hand loomed New Zealand wool! Ashford shows off the true beauty and craftsmanship that can only be achieved with handmade products.

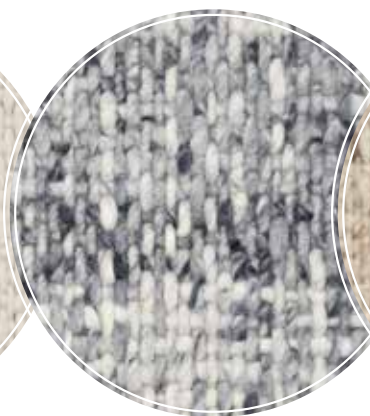


22511 Marble

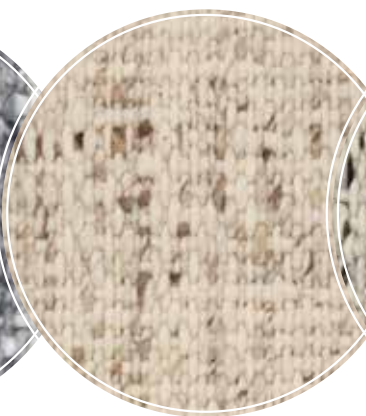
(hand loomed products should not be seamed)



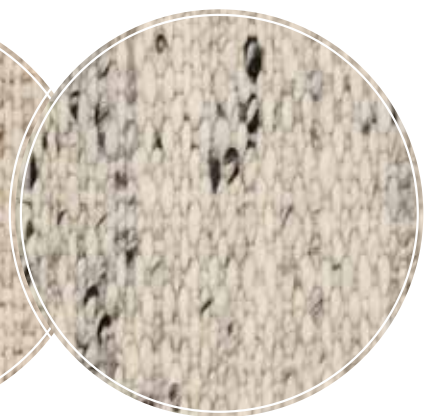
22512
Natural



22515
Midnight Blue



22513
Camel



22514
Panda

Barron Luxury Wool

Width 15'

100% New Zealand Wool

Barron is intricate, detailed and alluring. The delicate weave structure perfectly showcases the chunky accent yarns that run throughout the pattern. The soft hand loomed New Zealand wool provides an elegant aesthetic while remaining soft to the touch.

(hand loomed products should not be seamed)



16681 Oat



16682
Natural

16683
Limestone

16684
Spa

16685
Fossil

16686
Stone

Bimini Wool

Width 15'

55% Wool / 45% Polyester

Bimini's felted hand loomed wool and fiber dyed polyester yarn work together perfectly to create this handsome sisal inspired design. Heathered yarns add a hint of texture. This structured weave will be sure to make its presence known in the marketplace.



(hand loomed products should not be seamed)



16172
Cloud

16173
Grey Frost

16174
Oyster

16175
Straw

16176
Earth


Bonaire Wool

Width 15'


65% Sisal / 35% Wool

This delightful flatwoven small scale herringbone brings a new and exciting pattern to our customers. Whether on stairs, as custom sized rugs, or wall to wall installation, we have high expectations Bonaire will quickly become a standout in the line.


(flatwoven products should not be seamed)




21501 Straw




**Blonde
21502**



**Dove
21503**



**Shadow
21504**



**Stone
21505**

Corduroy Luxury Wool

Width 15'

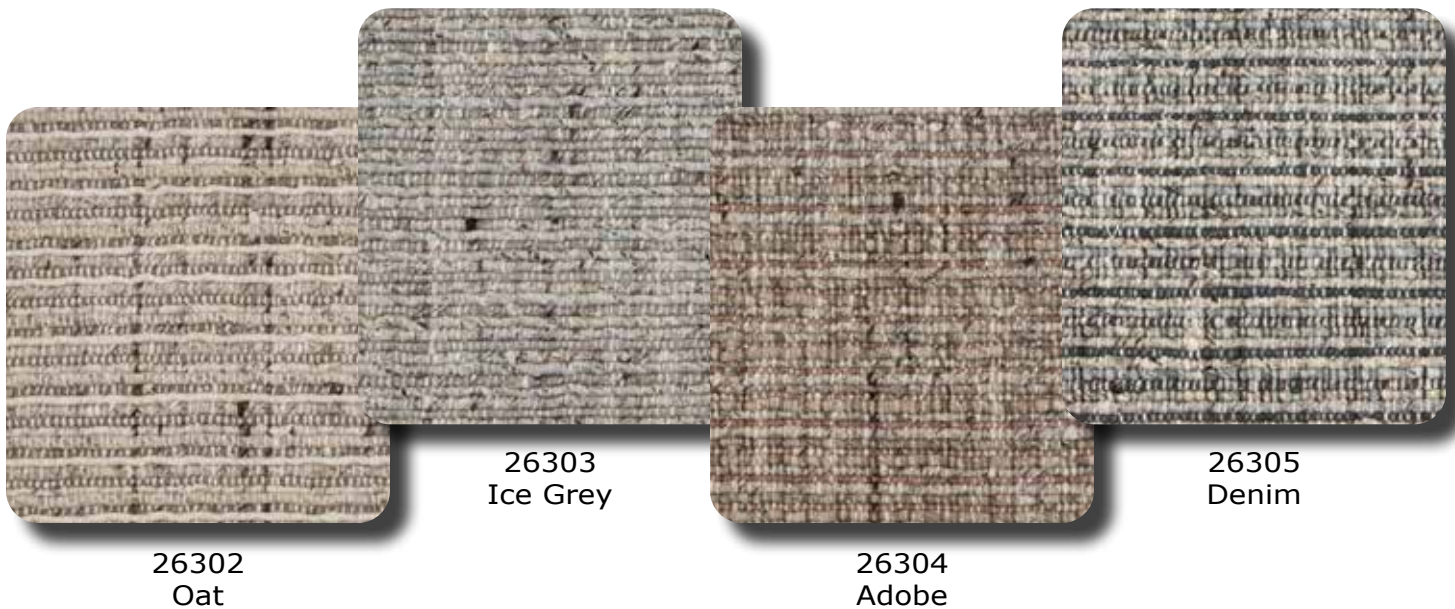
50% Wool / 25% Polyester / 25% Jute

Corduroy Luxury Wool is a stunning hand loomed wool containing 5 mesmerizing neutral tones. This textured wool will bring nothing short of elegance and class to any area.



26301 Harvest

(hand loomed products should not be seamed)



Safari Cheetah Wool

Width 15'

60% Wool / 40% Polyester



Safari Cheetah is a stylish flatweave construction with a beautiful cheetah pattern, available in 6 natural colors. Hand Loomed in India.

(hand loomed products should not be seamed)



102 Carbon

103 Charcoal

104 Granite

105 Oatmeal

106 Savannah

Safari Serpentine Wool

Width 15'

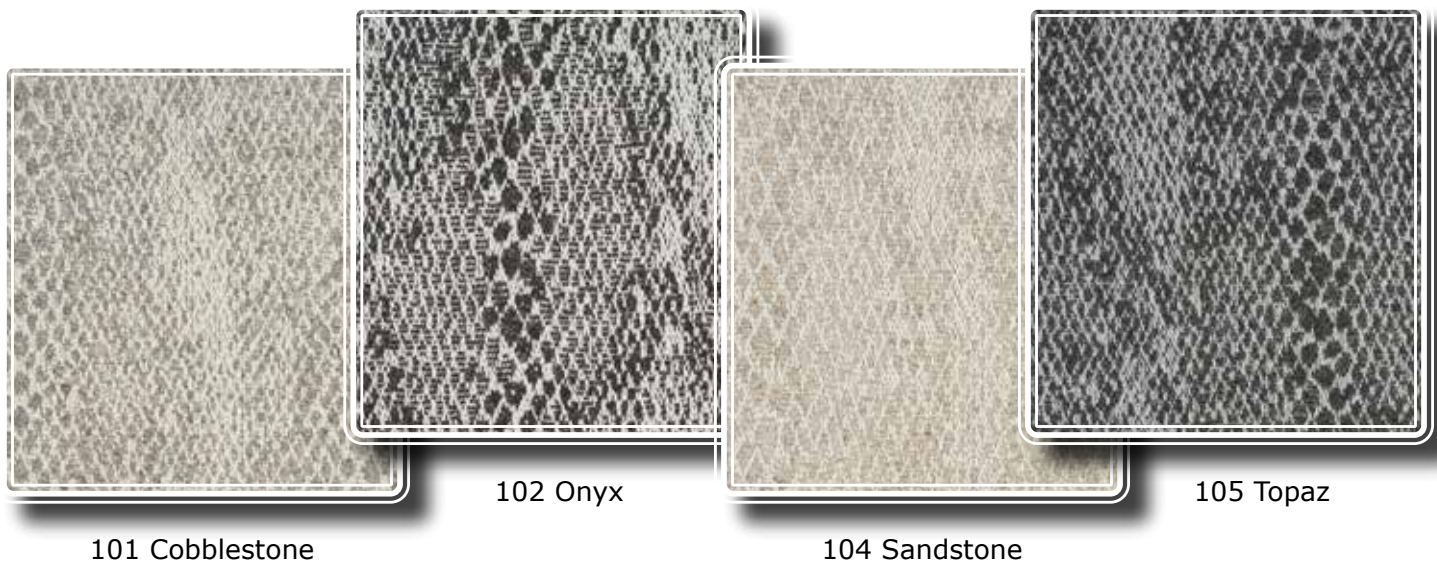
70% Wool / 30% Polyester

Safari Serpentine is a fashionable flatweave construction with a beautiful snake skin pattern, available in 5 natural colors.

Hand Loomed in India.



(hand loomed products should not be seamed)



Safari Zebra Wool

Width 15'

60% Wool / 40% Polyester



Safari Zebra is a stylish flatweave construction with an elegant zebra print pattern, available in 6 natural colors.

Hand Loomed in India.

(hand loomed products should not be seamed)

Tahara Wool

Width 15'

70% Wool / 30% Polyester



103 Carnivale



110 Toast



107 Landscape



105 Dusk

Tahara Wool offers casual but sophisticated aesthetic with an appealing basketweave aspect. A decorative hand loomed wool blend offered in both subdued natural tones and bold multi-colors.

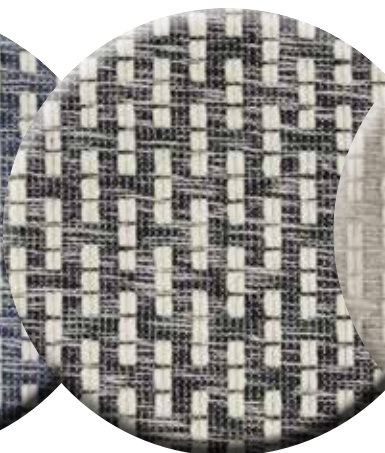
Hand Loomed in India.

*** Available in 10 colors**

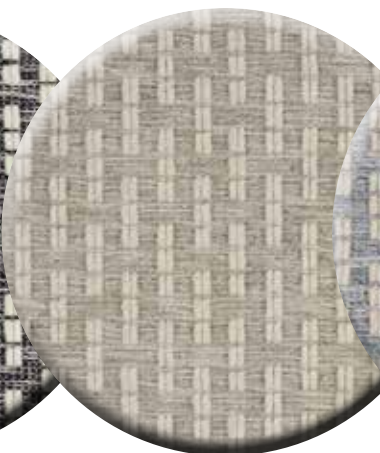
(hand loomed products should not be seamed)



101 Atlantique



104 Cavern



108 Linen



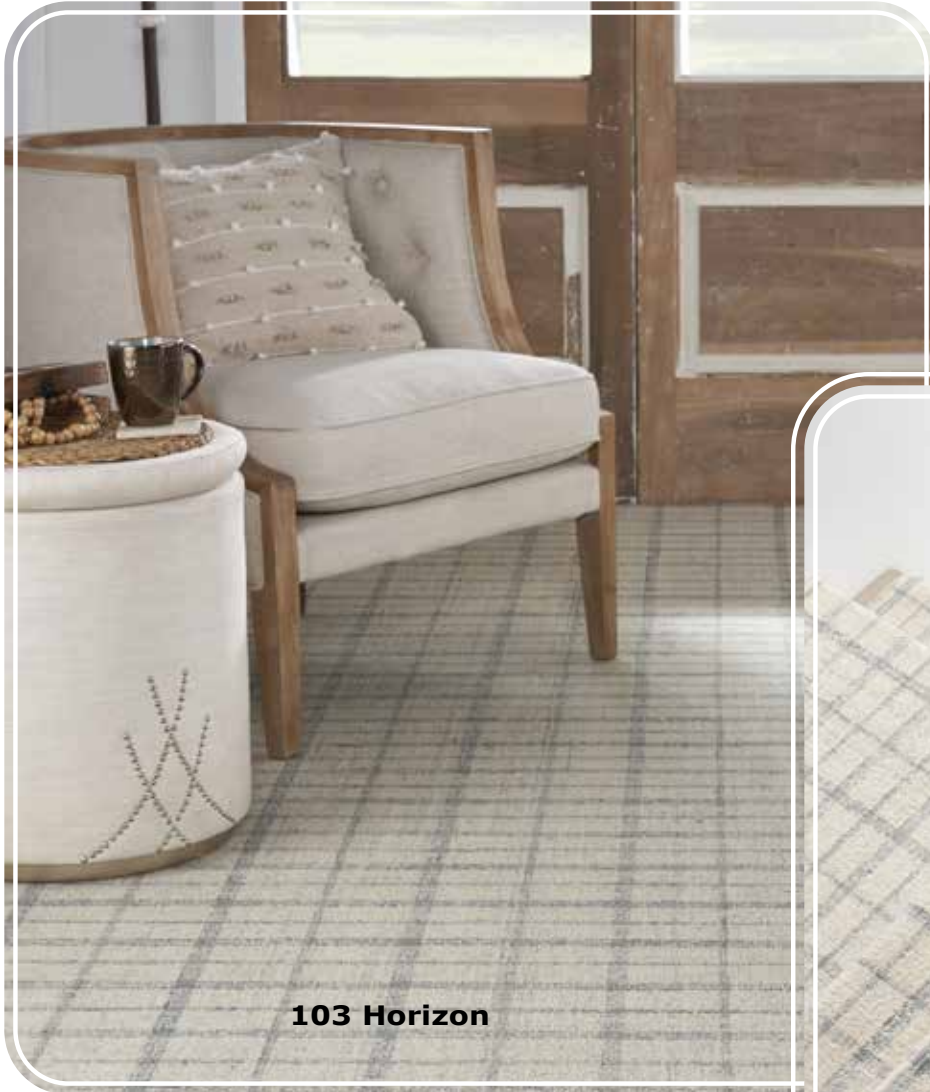
109 Placid

Tarlatan Luxury Wool

Width 15'

100% Pure Wool

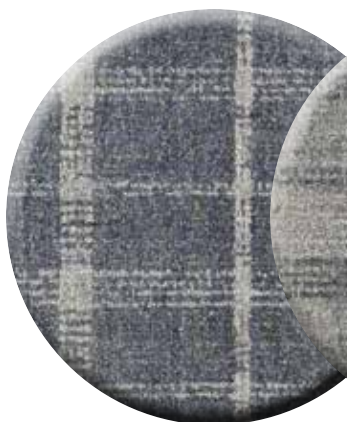
Tarlatan Luxury Wool is a gorgeous dense hand tufted micro-loop construction in a heavy wool pile applicable for residential and commercial use. Available in 8 ravishing colorways.



103 Horizon



(hand tufted products should not be seamed)



101 Denim



102 Gravel



104 Jade



106 Oatmeal



105 Mineral

Terraweave Wool II

Width 15'

60% Viscose / 25 % Wool / 15% Polyester

8 New Colors added to our Terraweave Collection!
This refreshingly contemporary selection of decorative carpet creates a marvelous colorfield to enhance a great variety of decorating styles.

Beautifully hand loomed wool and made in India!

(hand loomed products should not be seamed)

102 Ember

104 Harvest

105 Horizon

103 Fiesta

108 Spruce

107 Sapphire

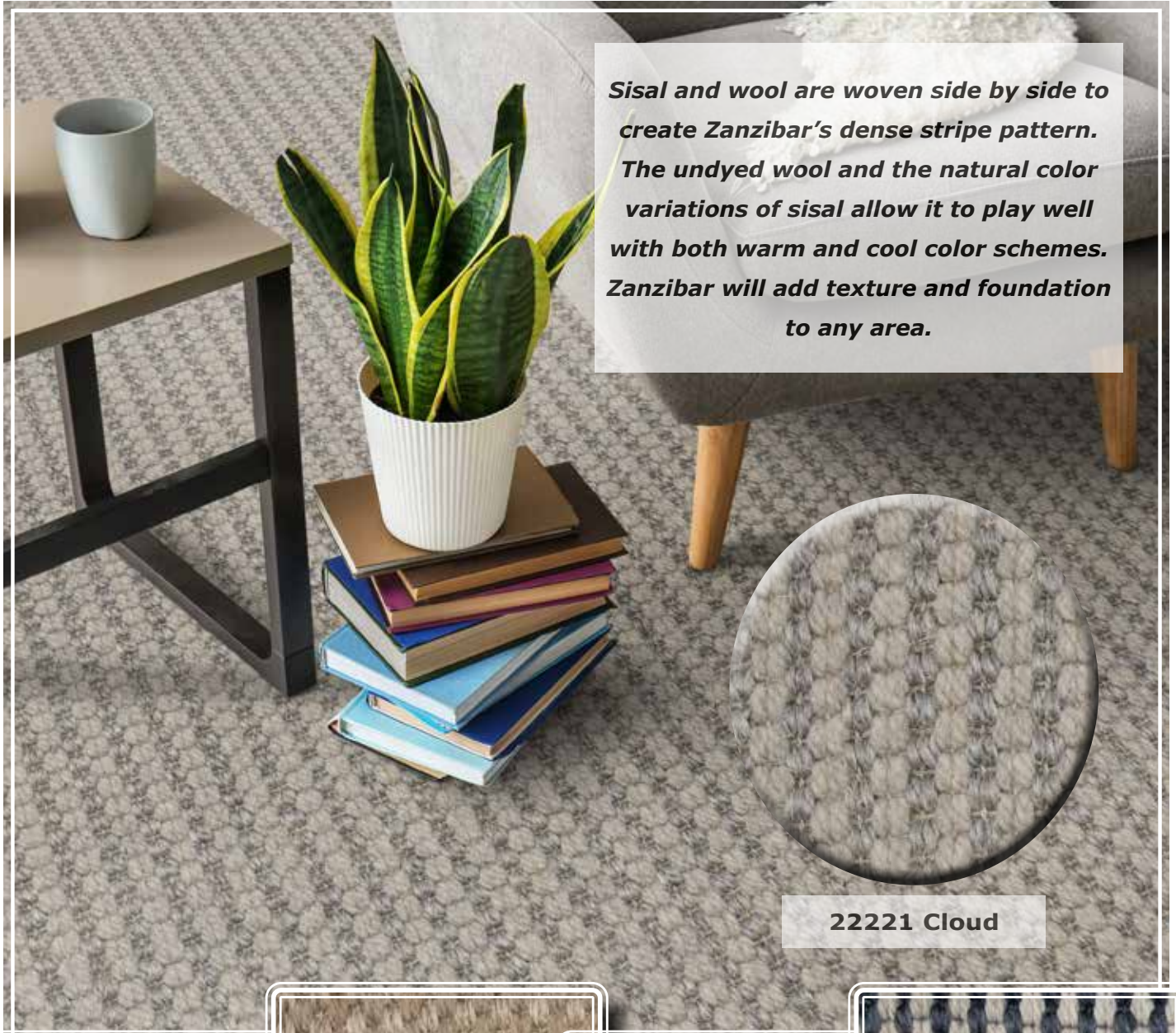
101 Earth

106 Pewter

Zanzibar Wool

Width 13'2"

70% Sisal / 30% Wool



Sisal and wool are woven side by side to create Zanzibar's dense stripe pattern. The undyed wool and the natural color variations of sisal allow it to play well with both warm and cool color schemes. Zanzibar will add texture and foundation to any area.

22221 Cloud



**Blonde
22222**



**Ecu
22223**



**Straw
22224**



**Lapis
22225**



Distinctive Carpets & Rugs

4183 Sinclair Street * Denver, NC 28037

800*849*2682 Fax 704*489*4404

www.distinctivecarepts.com